



technology

# ALOHA NOW

## Welcome to Aloha Now

Our online food and beverage ordering system, with integrated payments as well as a delivery/ click and collect option, is designed with ease of use in mind.

Responding to the latest trends in food ordering in the corporate market, Aloha Now offers corporate clients the platform to streamline the ordering of food and beverage items directly from the staff member's mobile device. Event teams can use **Aloha Now** to arrange a food delivery service from local outlets, ideal for meetings and company events.



## FEATURES



**Choose from a mobile website or native app**



**Create geo location offers**



**Integration with Stripe for fast setup**

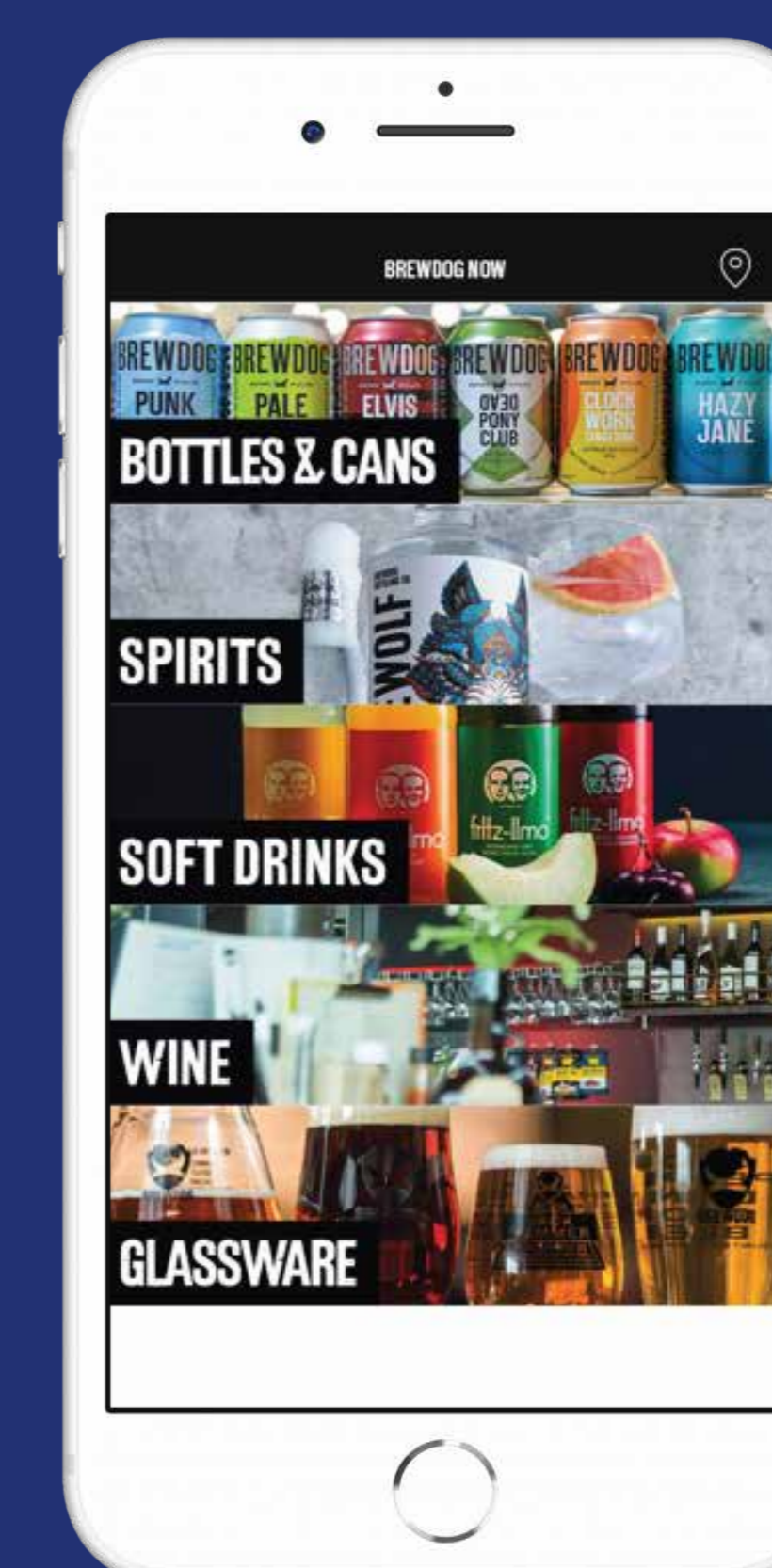
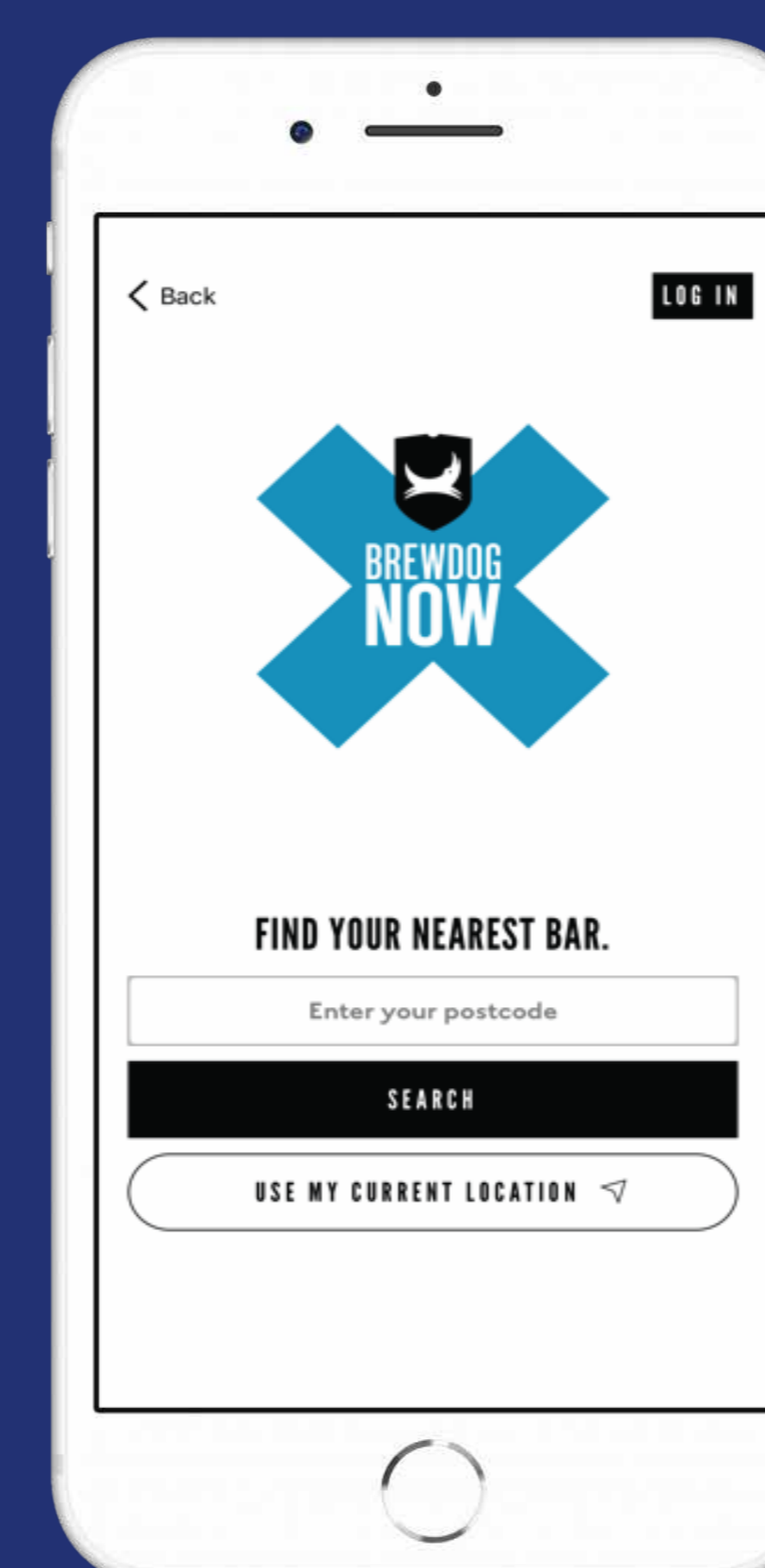
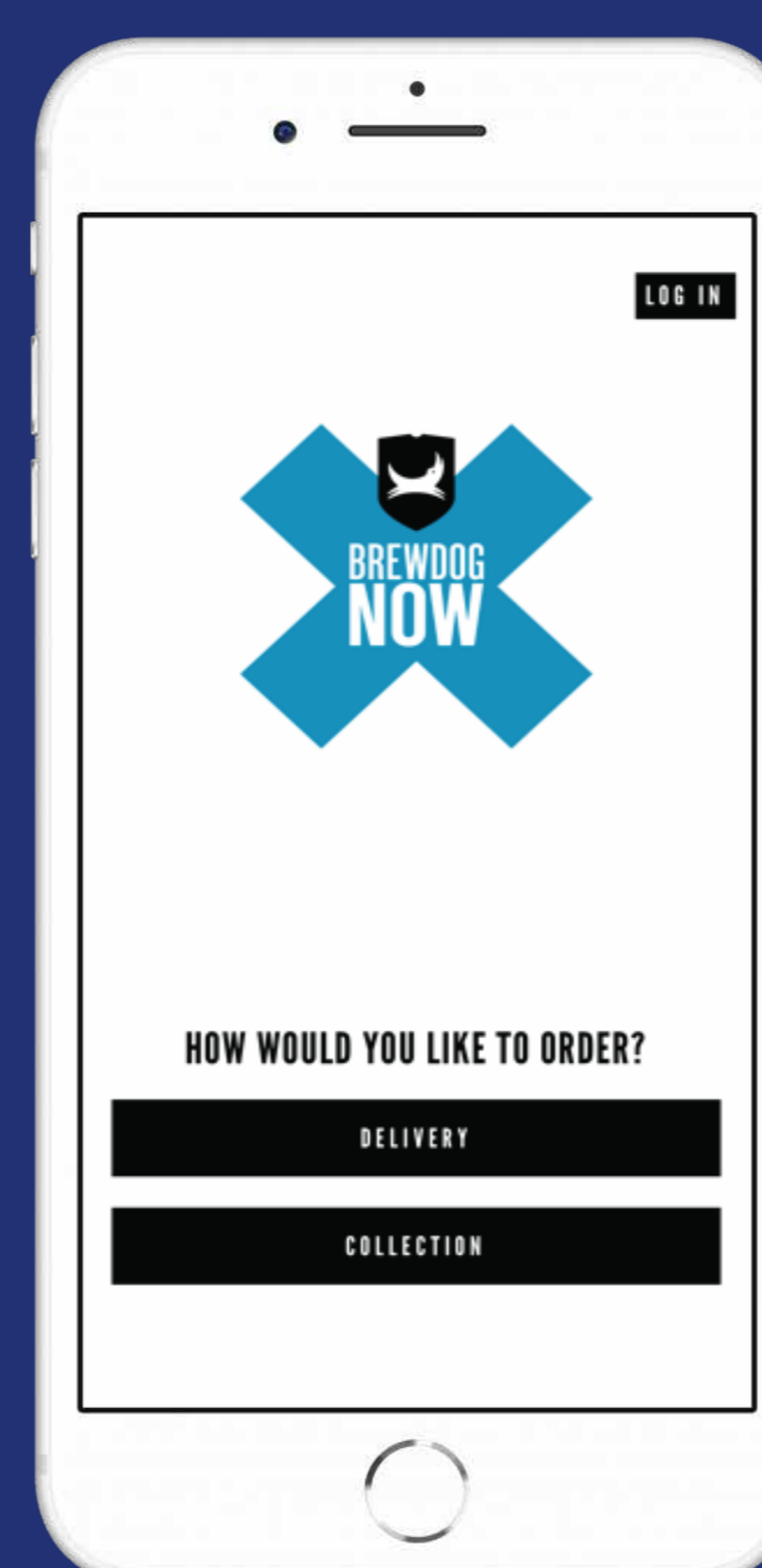


**Integrates with Aloha Loyalty**

Aloha is the leading restaurant technology, used by over 140, 000 outlets worldwide, and is now available with integration to Rendezvous Workspace. This mobile platform also supports a range of delivery and collection options, with integration to leading online ordering platforms such as Deliveroo. Aloha Now also offers companies the option to provide a meal subsidy, so staff can order from the cafeteria or external food outlet and the subsidy will be automatically applied, streamlining the experience for staff and simplifying the accounting for the company.

**Provides safe, secure and enhanced customer experience**

**Used by leading hospitality operators such as Brewdog**



**Call Today – 0800 731 8451**



# Food delivery to support any meeting or event

With Aloha Now all food service ordering is captured on the Aloha cloud platform and can be posted to the meeting or event financials.

This streamlined approach offers great flexibility to the meeting or events planner, particularly in the current challenging COVID period, when a full catering service may not be available internally. Meetings can proceed, with delivery to the right location and the complete financials correctly captured, so that chargeback to departments or clients is a seamless process. Here are some of the benefits:



## BENEFITS

### TAKEOUT



#### Speed of Service

Customer Lookup, intuitive custom order flow, Caller ID Integration (none VOIP).



#### Order Accuracy

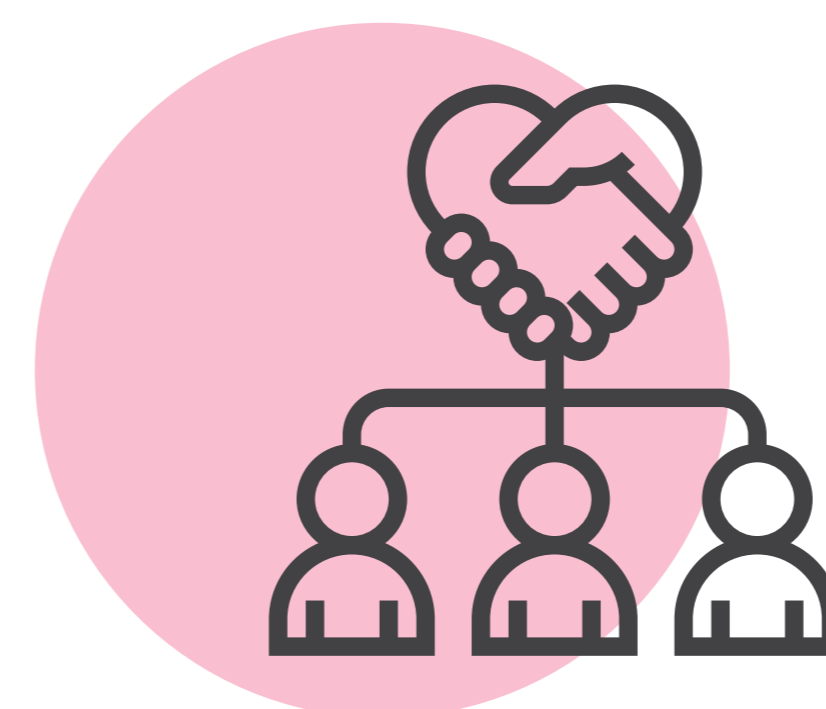
Future orders with capacity management.



#### Accurate Quote Times

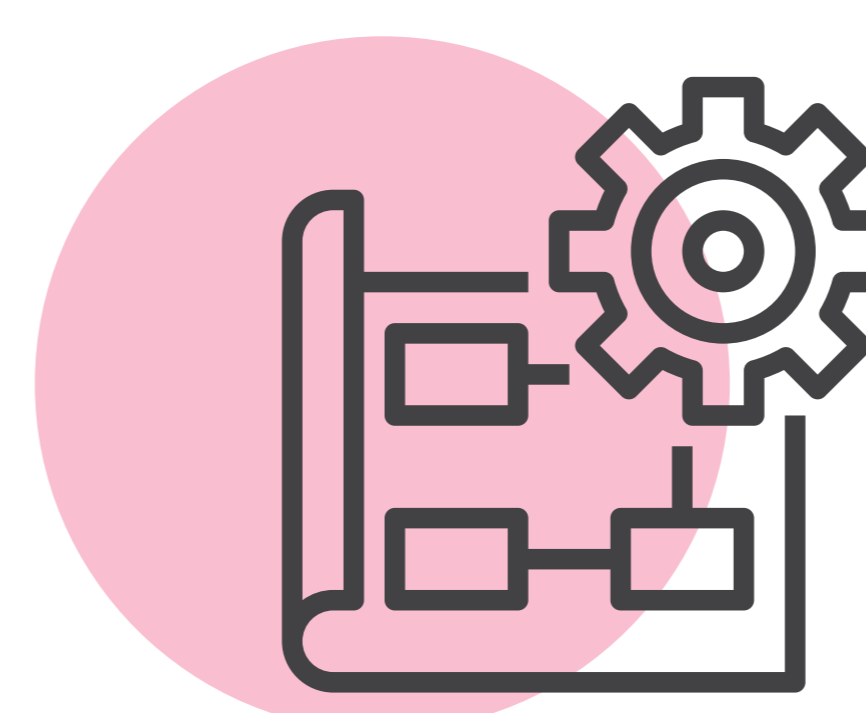
On the go quote time management, integrates with Aloha Kitchen for load management.

### CLOUD PLATFORM



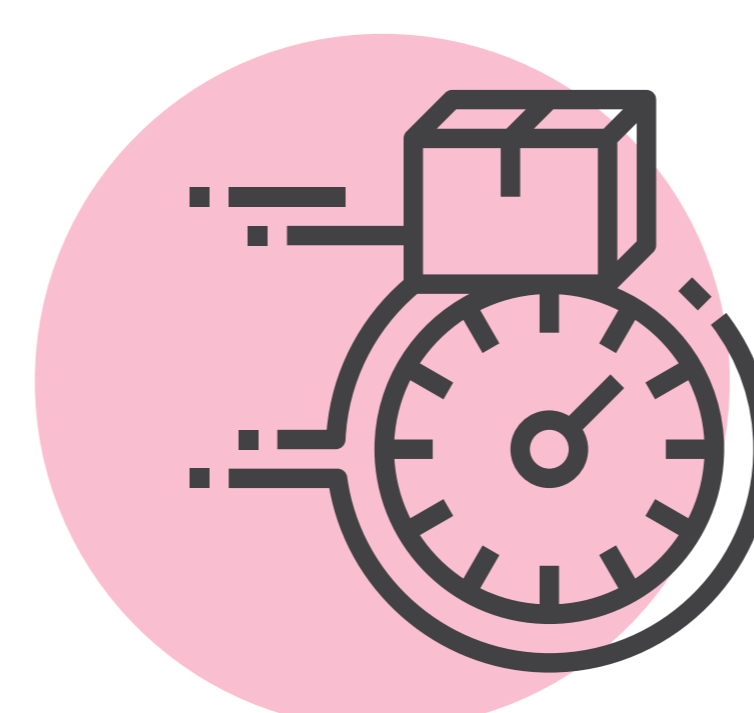
#### Integration with food aggregators

Injects orders from all major food aggregators directly into the Aloha Takeout Module.



#### Efficient management of your menu

Pulls menus from Aloha, to allow management of your offering across multiple platforms, including the ability to change and republish your menus seamlessly.



#### Auto accept, no rekey mistakes and speed of service

To positively impact your rankings on the aggregator website.

Want to discover more?

VISIT

[www.alohaepos.co.uk](http://www.alohaepos.co.uk)